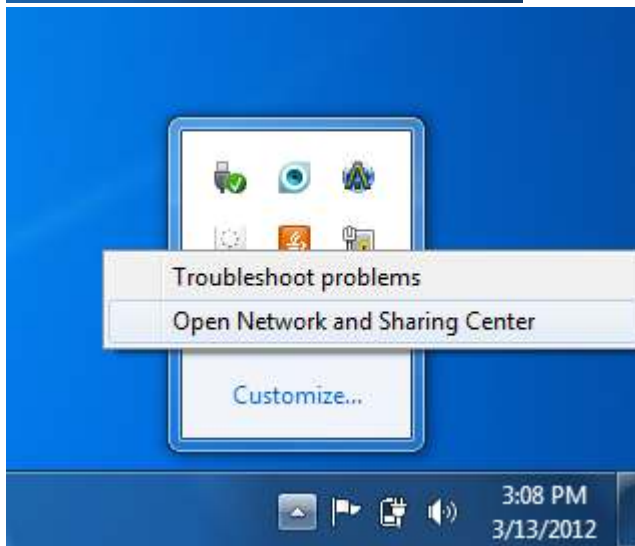
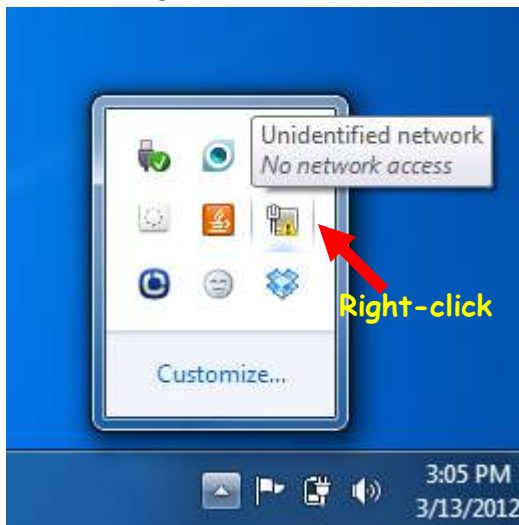


Windows 7/Vista (SP 2) USMSecure Setup Guide

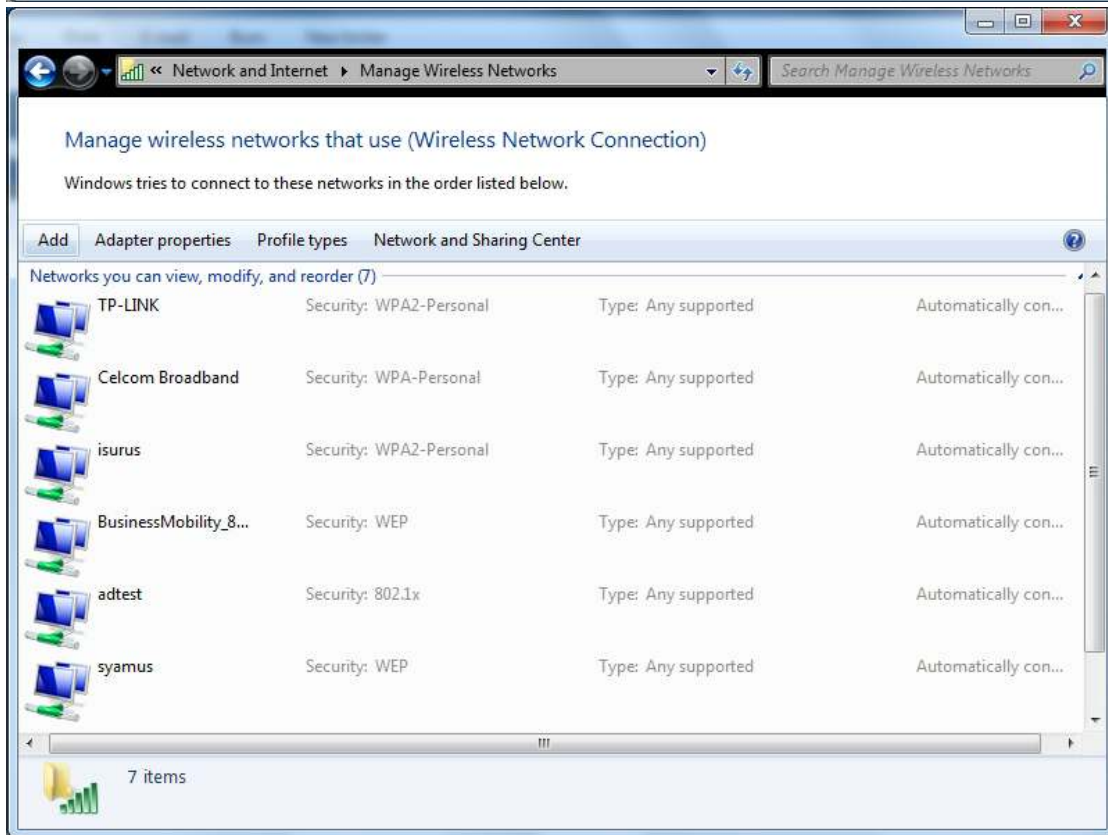
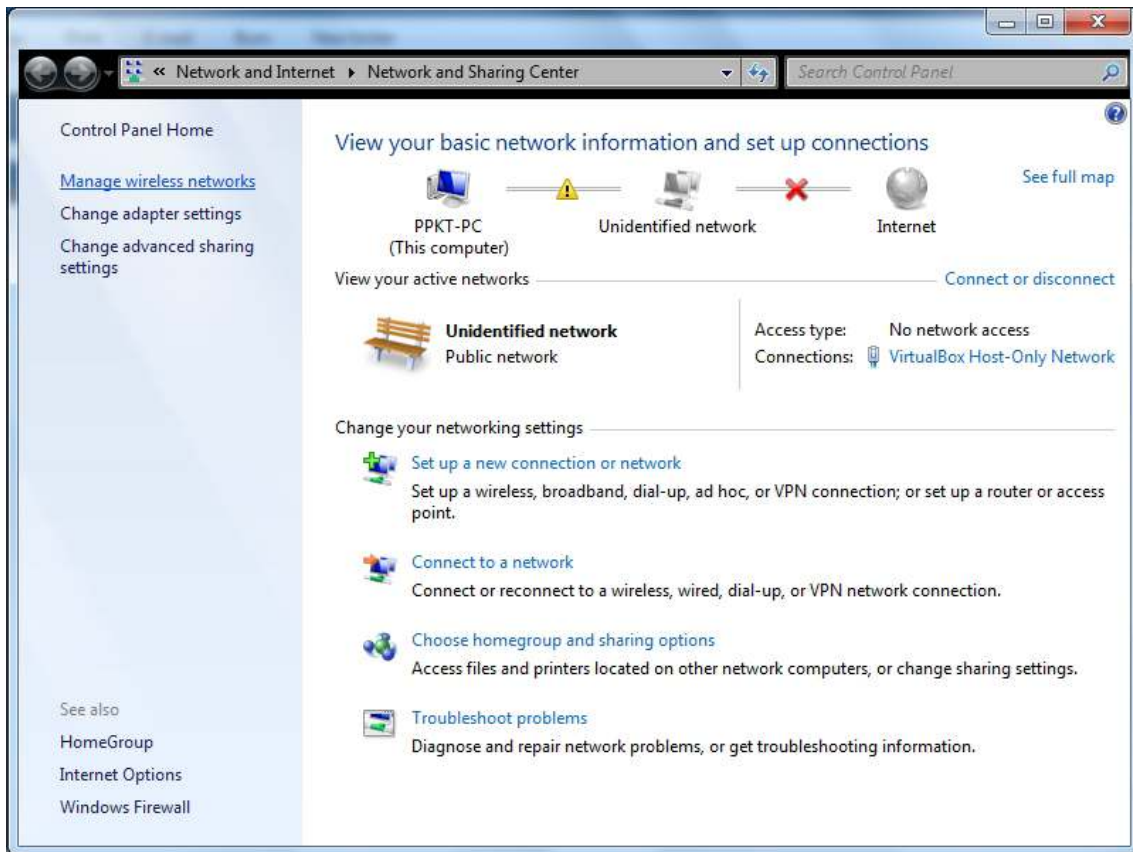
**Requirements

Windows 7 or Windows Vista with Service Pack 2 update

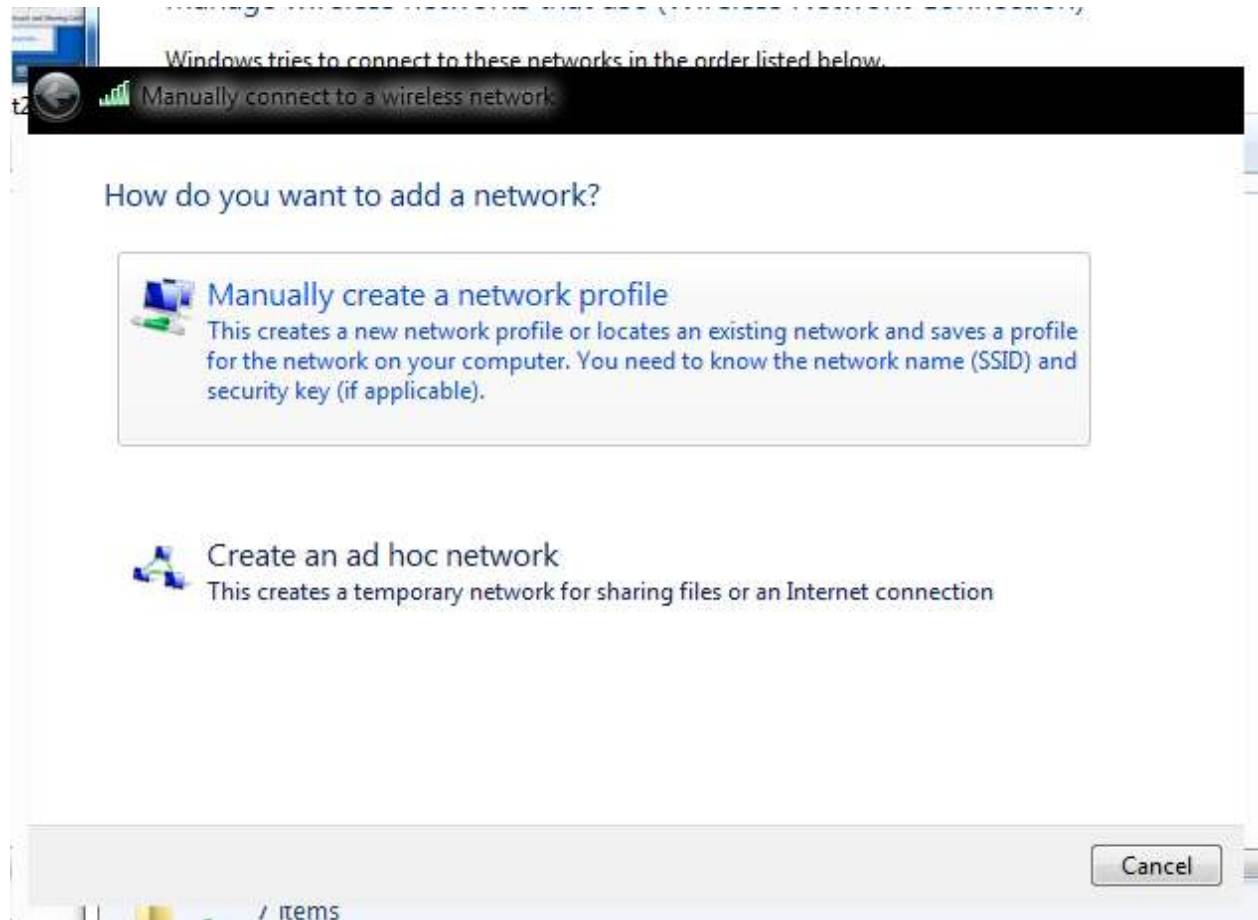
1. Make sure wireless is turned on
2. Locate and right-click on network connection icon on task tray. Options menu will pop up.



3. Choose '**Open Network and Sharing Center**' option. Network and Sharing Center window will be displayed. Click on '**Manage wireless networks**'. Manage wireless networks window will be displayed.



4. Click on **'Add'** button to open up **'Manually connect to a wireless network'** window, then click on **'Manually create a network profile'** option as below to open configuration dialog box.



Windows tries to connect to these networks in the order listed below.

Manually connect to a wireless network

Enter information for the wireless network you want to add

Network name:

Security type:

Encryption type:

Security Key: Hide characters

Start this connection automatically

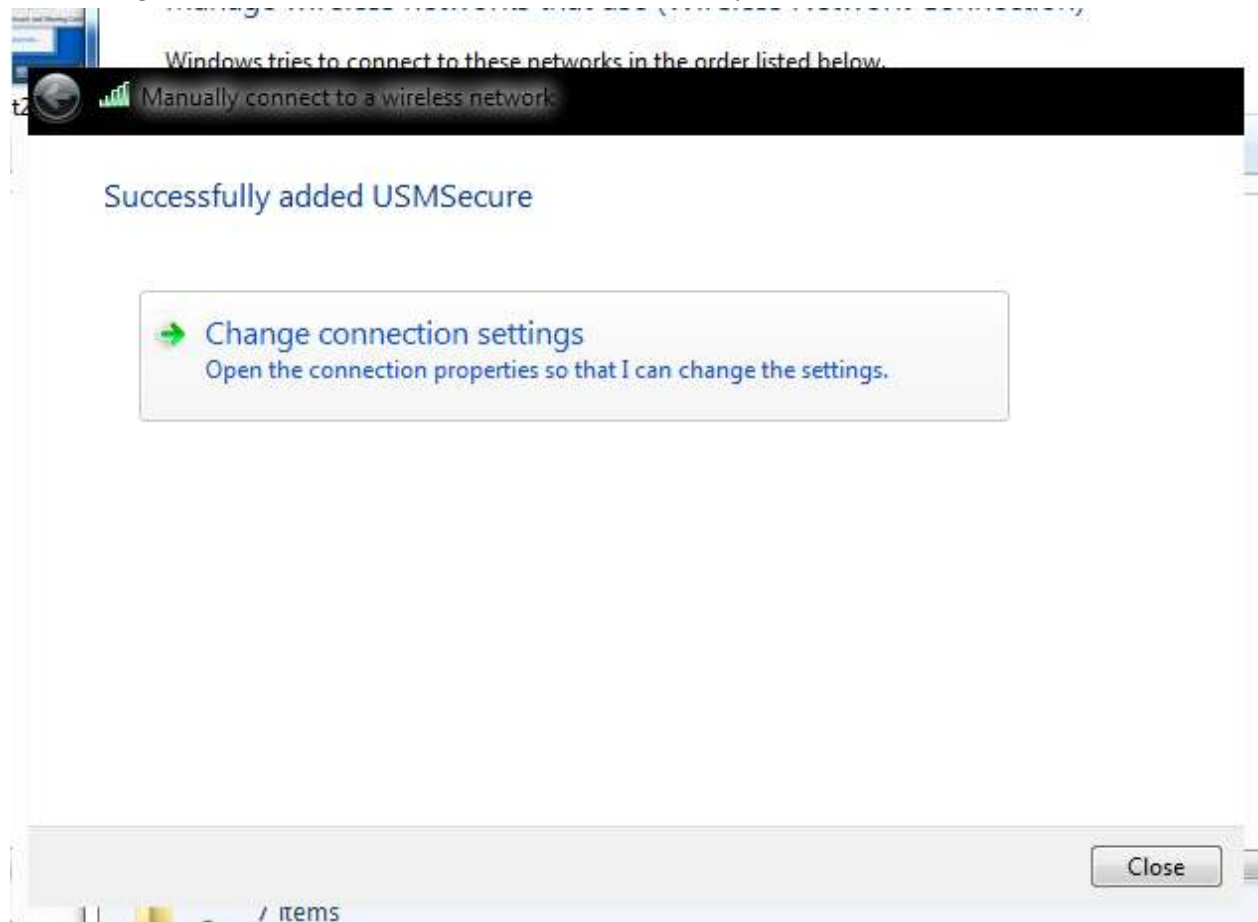
Connect even if the network is not broadcasting

Warning: If you select this option, your computer's privacy might be at risk.

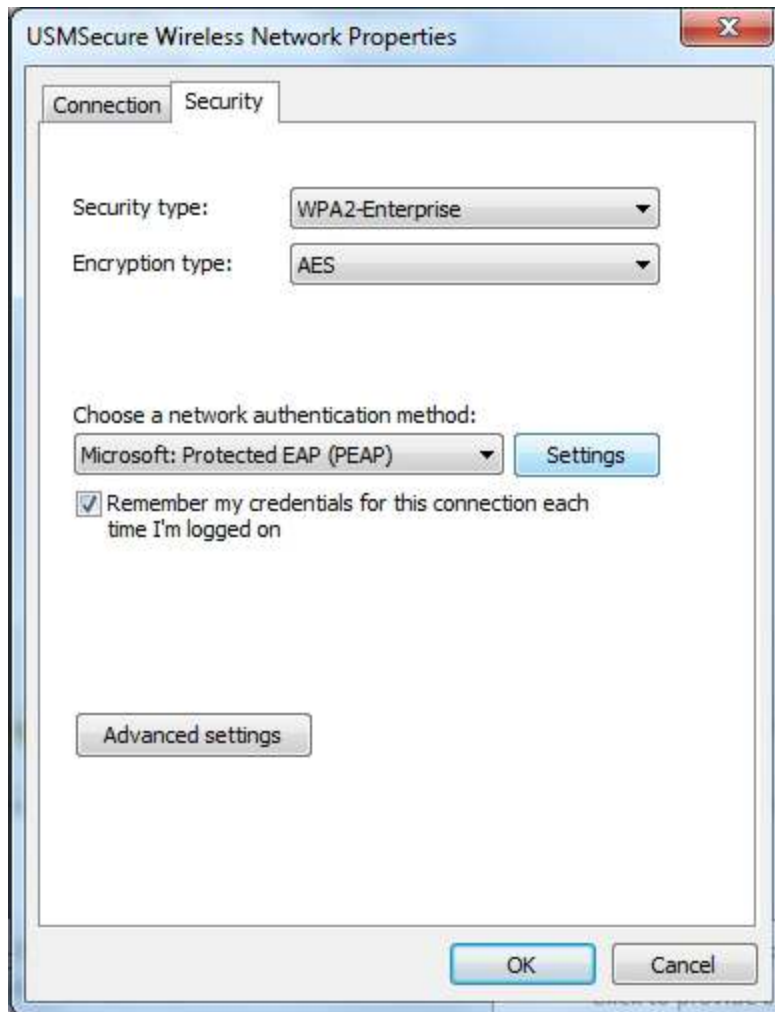
Next

Cancel

5. Enter configuration as above, then click on **'Next'** button to open next window.

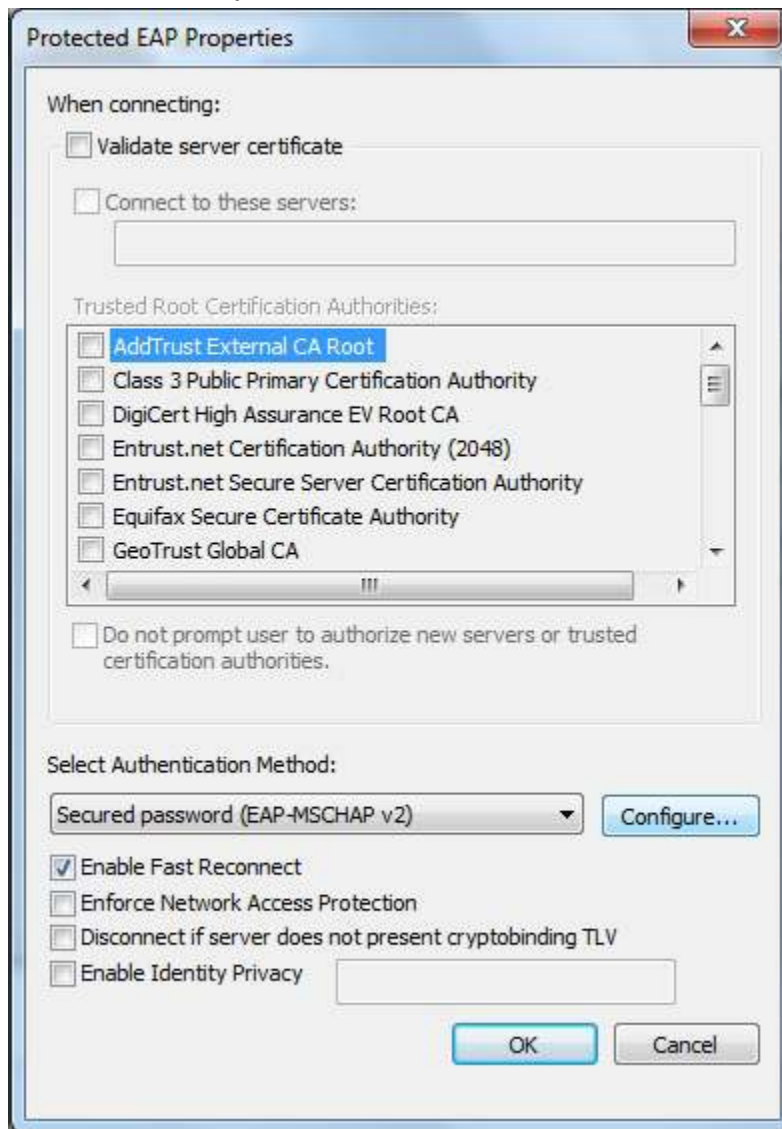


Click on **'Change connection settings'** to open **'USMSecure Wireless Network Properties'** window as below;



Click on **'Security'** tab. Make sure the settings is as above. Click on **'Settings'** button to open

'Protected EAP Properties' window as below;

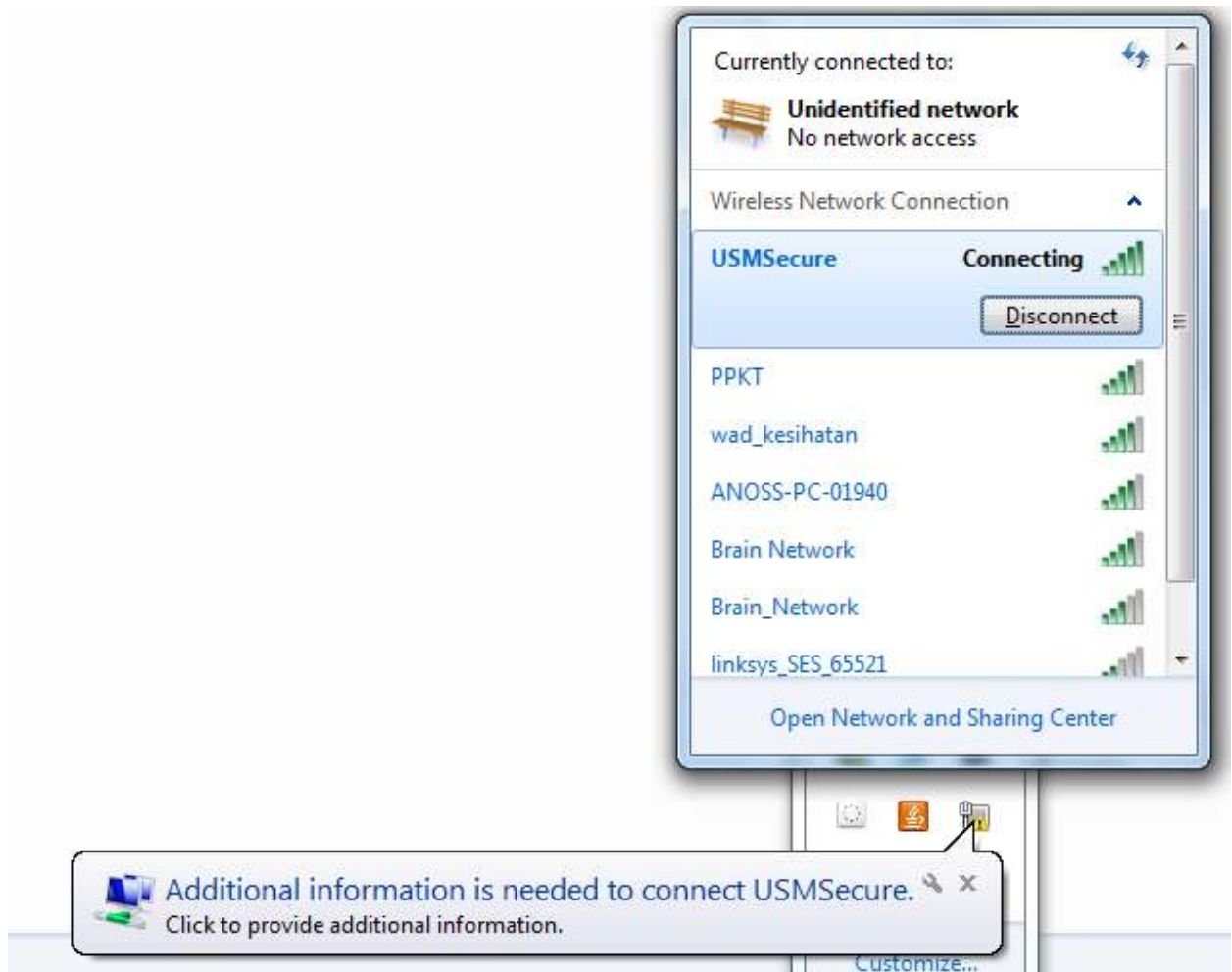


6. Un-tick 'Validate server certificate' then click on 'Configure' button to open window as below;



Un-tick 'Automatically use Windows logon name and password (and domain if any)' then click 'OK' button.

7. Click **'OK'** button on all previous windows to close configuration, then click on network connection on task tray to make sure USMSecure wifi connection is available. Connect to USMSecure to open up pop-up message as below;



8. Click on the pop-up message and enter your account username (xxx@student.usm.my for student or xxx@usm.my for staff) and password as below;



9. If there's no problem with your account authentication, click on network connection icon on task tray again to verify that you have successfully connected to USMSecure as below;

